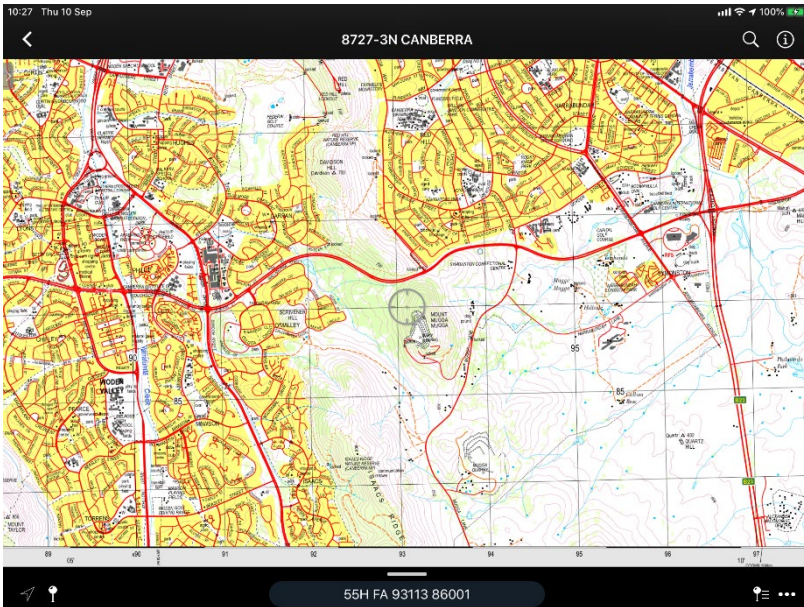


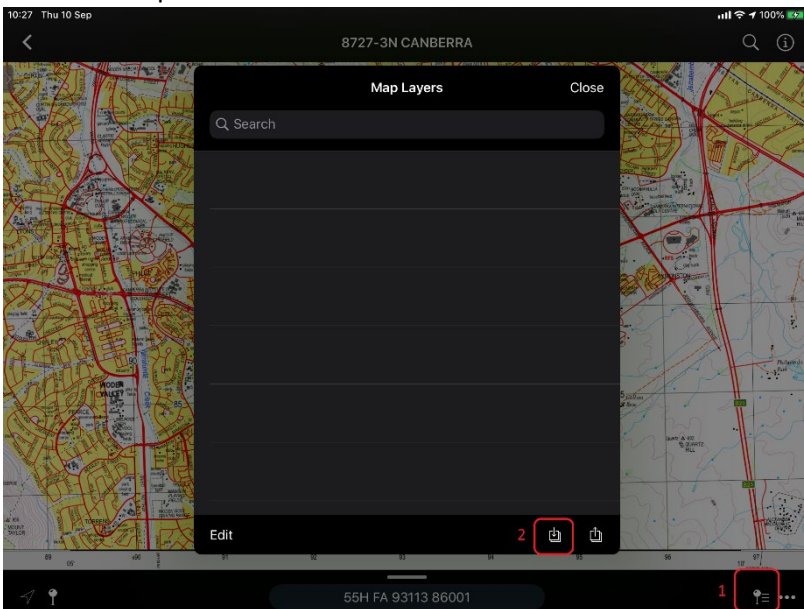
AVENZA - Geofences

Initial steps happen within Spatial Services, where the search areas are created as an Esri Shapefile and then zipped before making available on the Google Drive in the appropriate folder

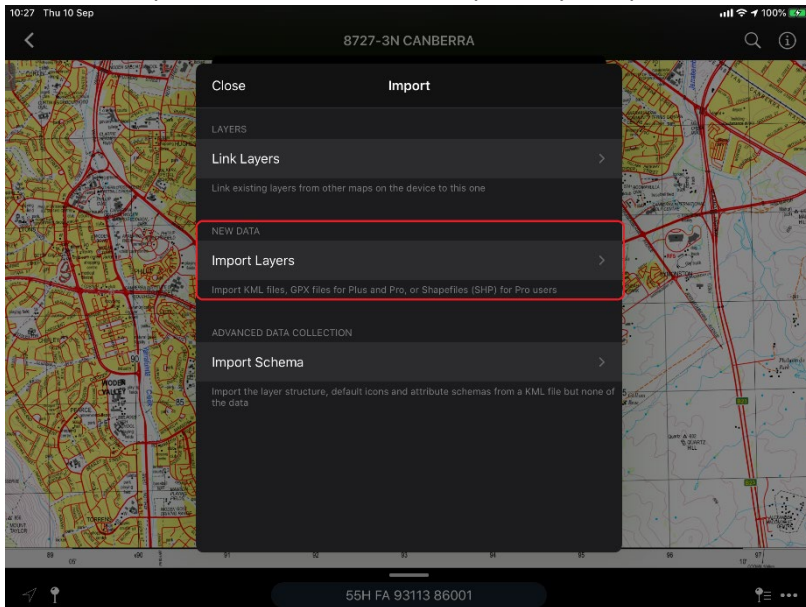
- 1) First step: in Avenza, open the topo map for the appropriate area you will be searching in:



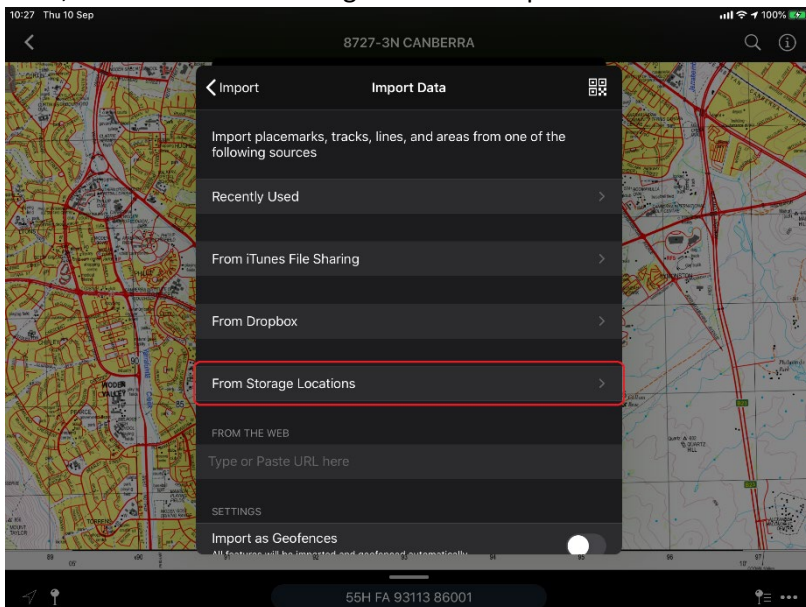
- 2) Next, go to the second from the right at the bottom of the screen and bring up the Map Layers window. Then select the import icon:



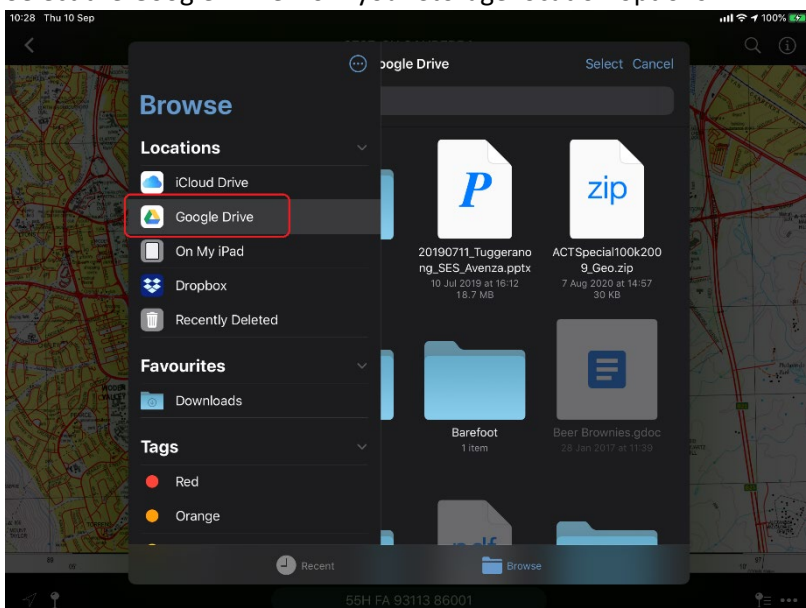
3) From the Import window, select the Import Layers option:



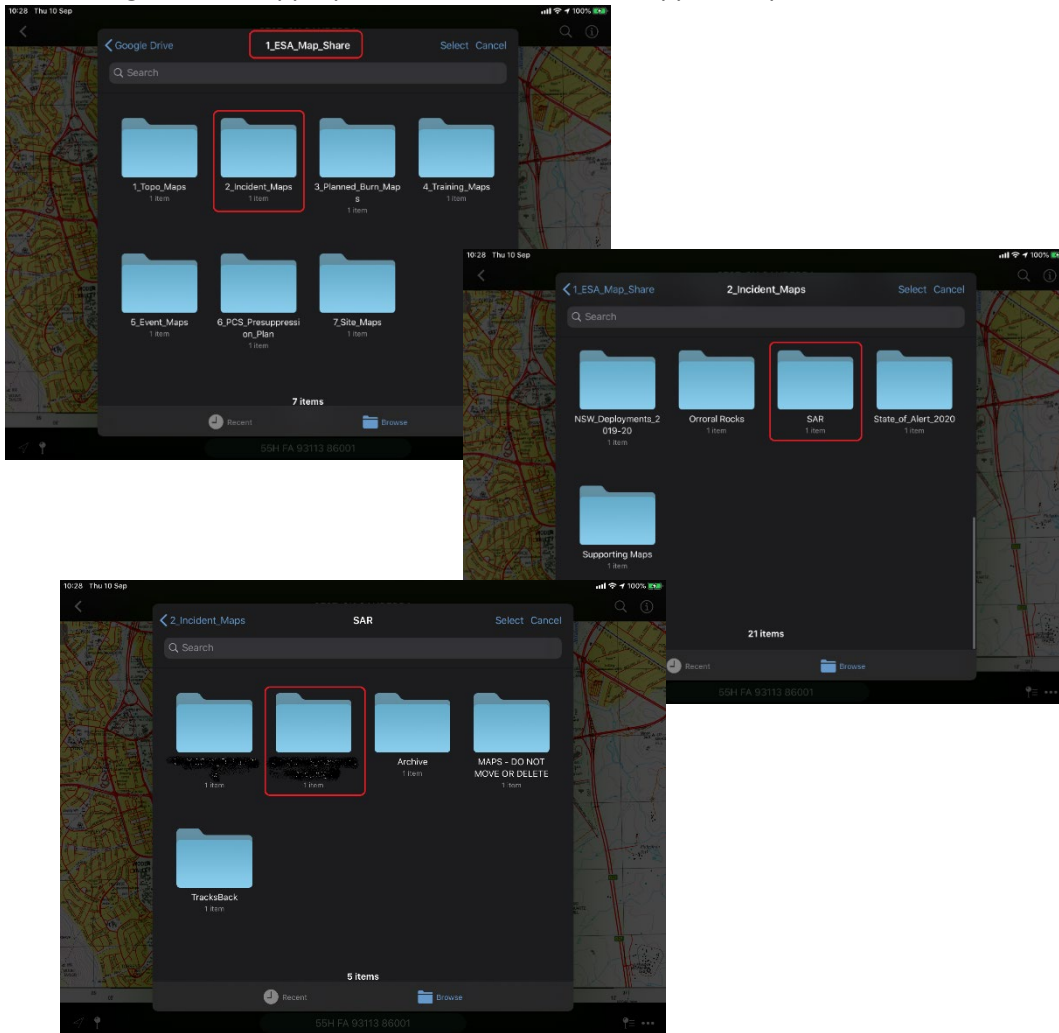
4) Next, select the “From Storage Locations” option:



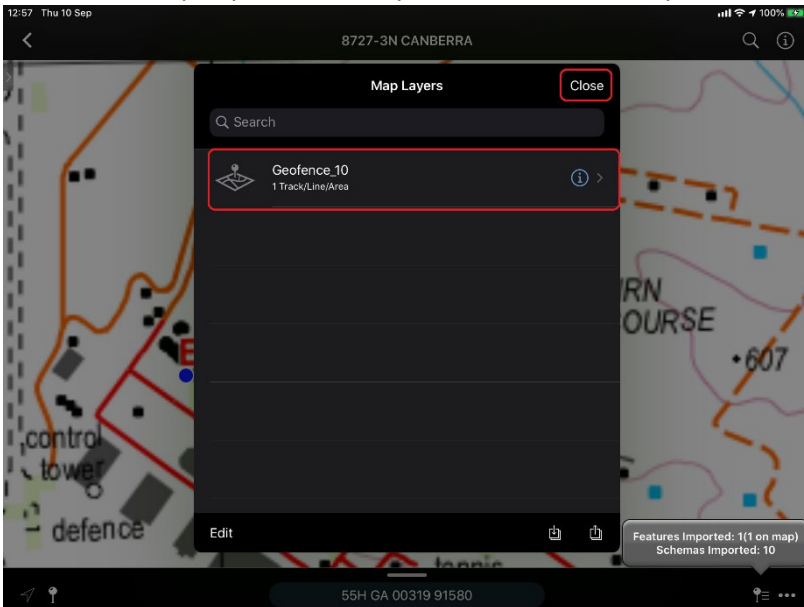
5) Select the Google Drive from your Storage location options:



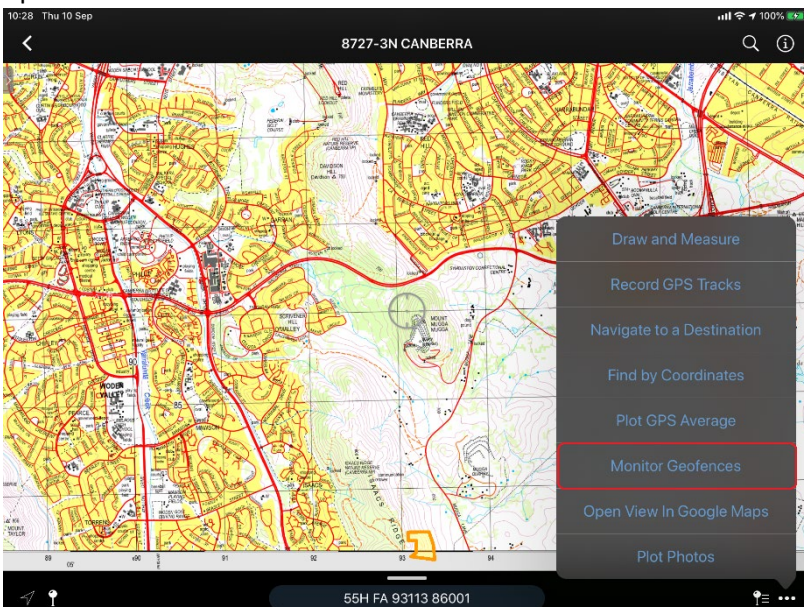
6) Now, navigate to the appropriate location where the zipped shapefile is located:



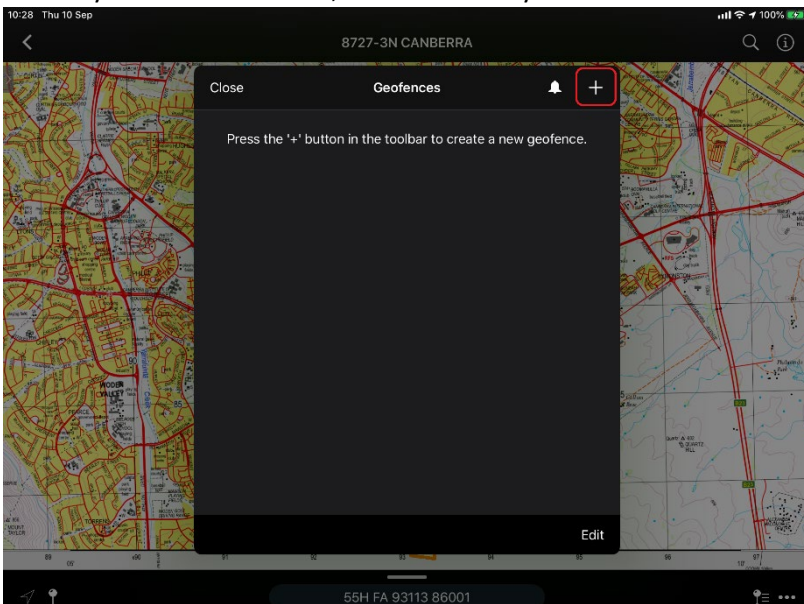
- 8) Back in the Map Layers window, you will see that the layer that has been added, and you can close this window:



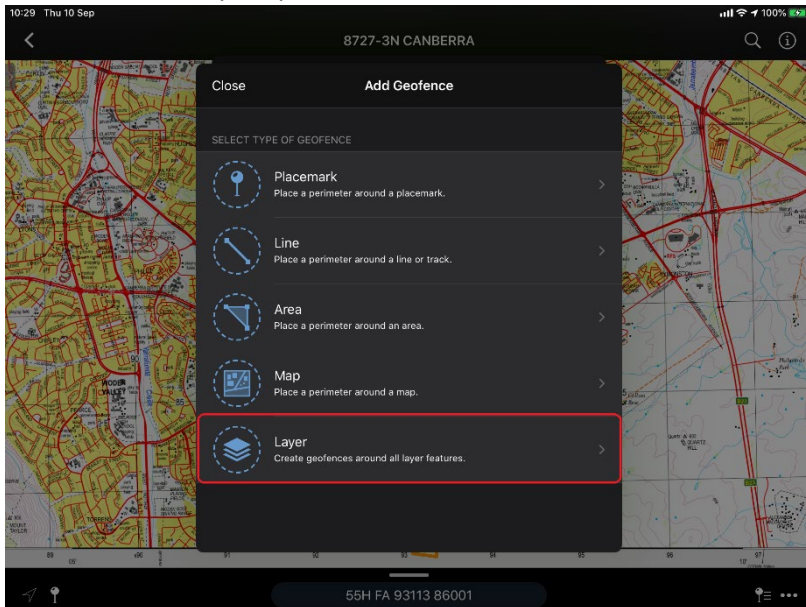
- 9) To activate the Geofence, from the ellipsis (...) in bottom left of screen, select Monitor Geofences from the options list:



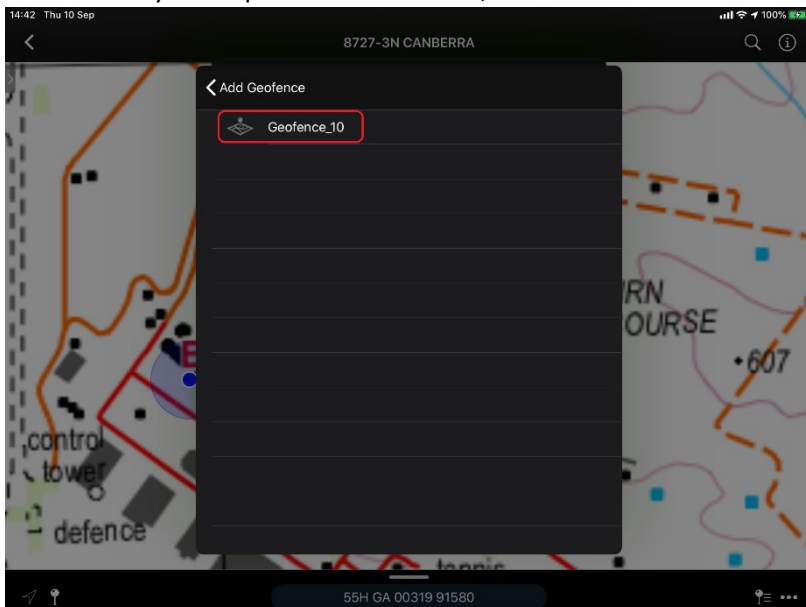
- 10) To add your chosen feature, click on the + symbol:



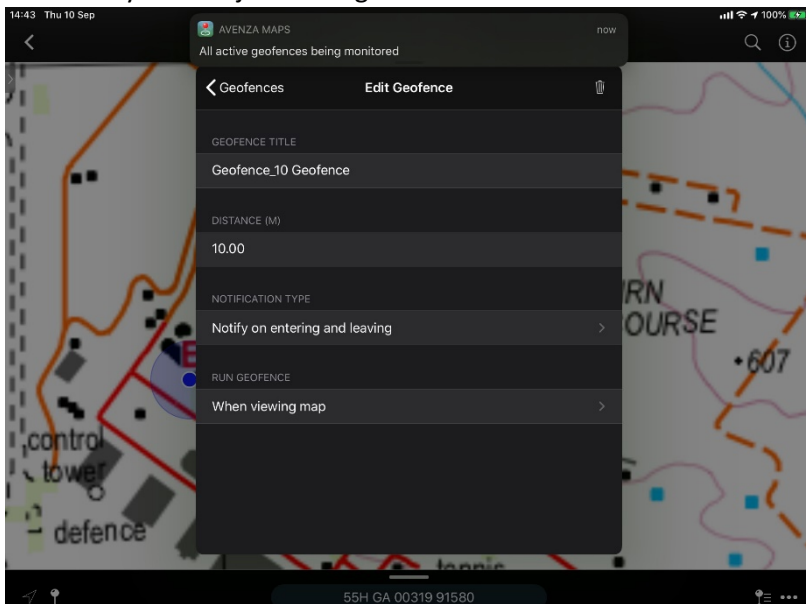
11) Now select the Layer option:



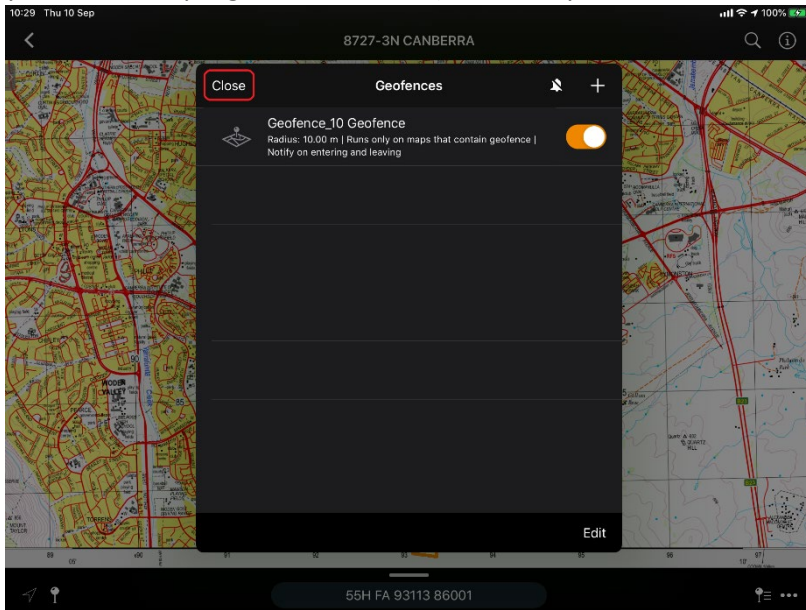
12) You will see your imported feature here, so select it:



13) Once selected, you will see a window pop up advising that the geofence is being monitored, and the window will allow you to adjust settings:



- 14) Back to the Geofences window, you have the option to turn on/off the geofence as required (which is useful if you have multiple geofences loaded) and then you can close the window:



Once activated, the geofence will notify you when you cross over the boundary of your geofence. Remember to either turn off or remove the geofence once completed.